

SONORAN VISTA

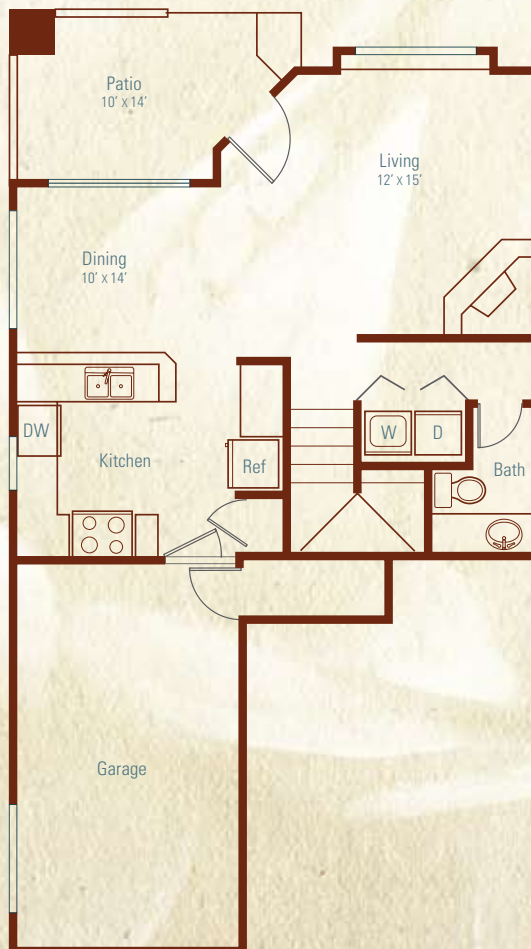
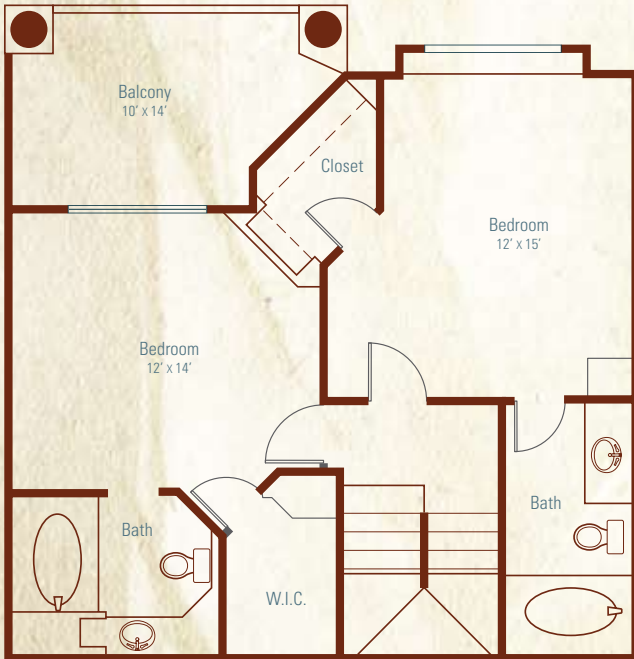
9340 East Redfield Road Scottsdale, AZ 85260

T (480) 614-4300 F (480) 614-4303

sonoranvista@riverstoneres.com | www.sonoranvistaapartments.com

TATUM

2 bedrooms | 2.5 bathrooms
{ 1,185 square feet }



Townhome Features:

- Expansive gourmet kitchen with GE stainless steel on black appliances
- Granite countertops
- Plush carpeting
- Breakfast bar
- Faux wood flooring in kitchen & bathrooms
- Cherry wood cabinetry in kitchen & bathrooms
- Brand new light fixtures with brushed nickel
- Ceramic tile entry way & fireplace
- Oversized double-paned windows
- Track lighting in kitchens
- Window seat in living room & second bedroom
- Large walk-in closets
- Roman soaking tub
- 9-foot ceilings
- Full-size washer & dryer
- Large downstairs patio
- Large upstairs balcony
- Wood burning fireplace
- Direct-access garage
- Wired for Internet, cable & phone

